

MMS-OC Password Security Changes

Advanced Security Password Features:

Starting with Release 2.23.1, the following changes have been made to the MMS-OC program to support enhanced password security:

- New passwords cannot match the previous 3 passwords.
- Minimum Password Length – a minimum password length can be specified.
The value can be 1 to 64.
- Use Complex Passwords – enforce complex passwords when changing user passwords.
The password will be required to have at least one each of the following:
 - A. upper case alpha character
 - B. lower case alpha character
 - C. numeric character
 - D. special character
- Allow Account Lockout – enforce account lockout after 3 unsuccessful sign-on attempts.
An administrative user will need to unlock the account.

The username field size has been expanded from 12 to 20 characters.

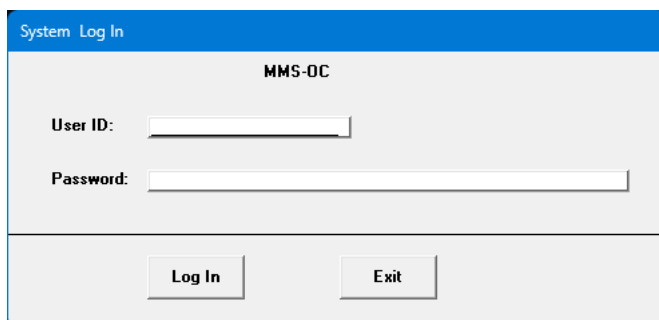
The password field size has been expanded from 14 to 64 characters.

The existing user security file will be automatically upgraded to support the new features the first time the new version of the program is run.

A message box will be briefly displayed during the upgrade process.

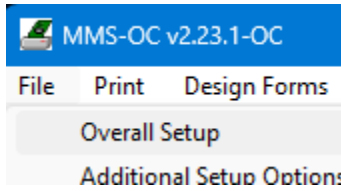
Program Changes:

The System Log In screen has been modified to support the expanded field sizes for the User Name and Password fields:

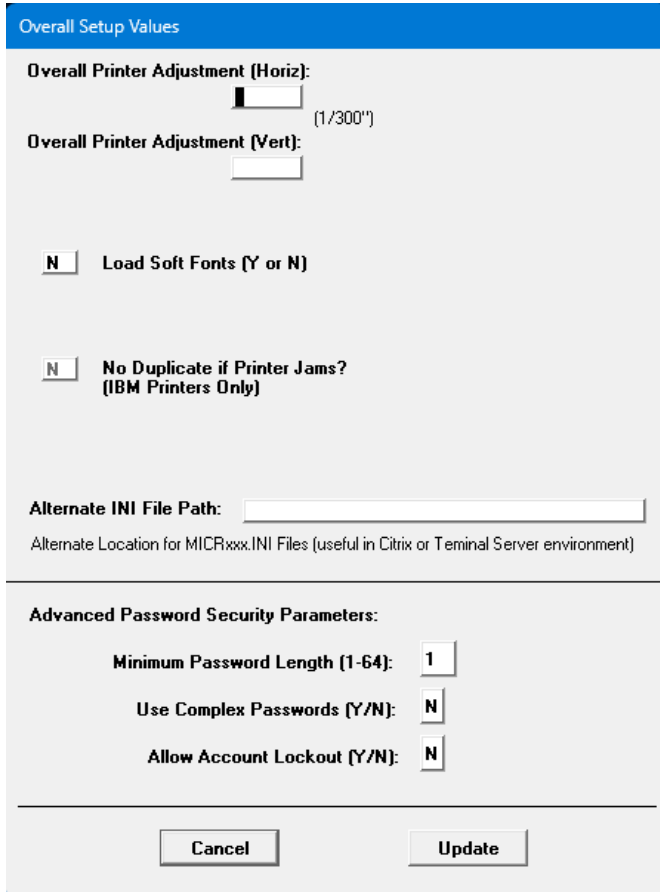


The screenshot shows the 'System Log In' window for 'MMS-OC'. It features two input fields: 'User ID:' and 'Password:'. The 'User ID' field is significantly wider than in previous versions, and the 'Password' field is also wider. At the bottom, there are two buttons: 'Log In' and 'Exit'.

The advance password security options are not enabled by default. To view/modify the advanced password security parameters, from the “File” menu, select “Overall Setup”:



The Advanced Password Security Parameters are displayed on the lower section of the screen:

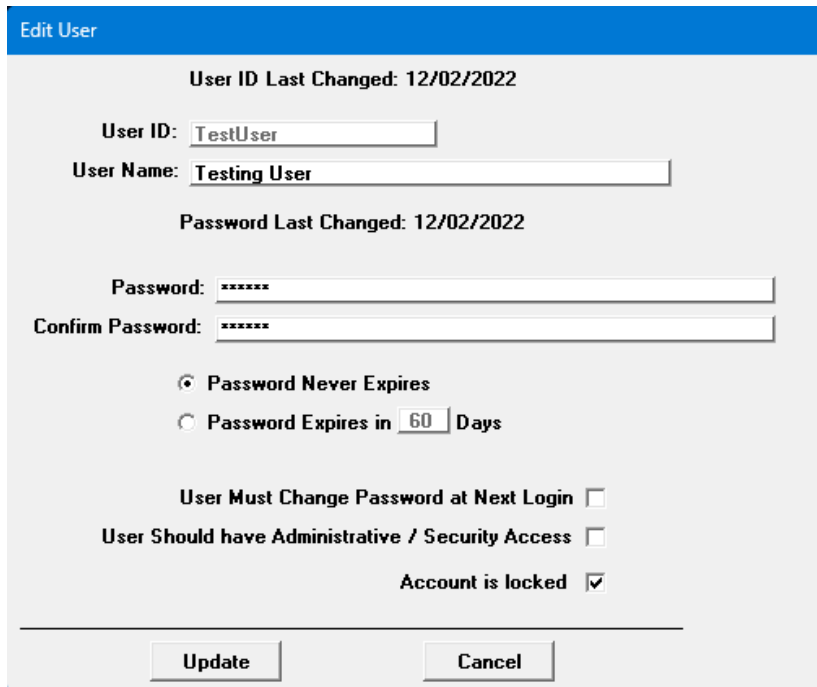


Update the parameters as required for your institution and select “Update”.

Administration Changes:

When creating/modifying users, the “Edit User” screen has been modified as follows:

- The “User ID” field has been expanded from 12 to 20 characters
- The “Password” and “Confirm Password” fields have been expanded from 14 to 64 characters
- A new “Account is locked” has been added to allow administrative users to lock/unlock individual user accounts.



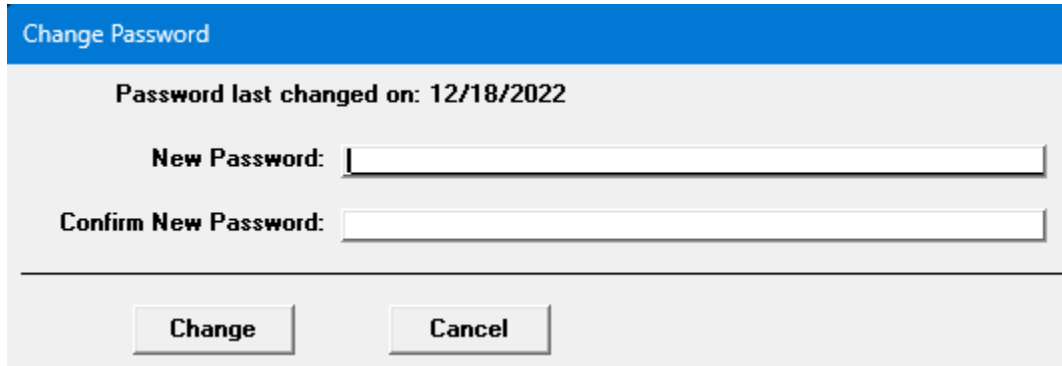
The screenshot shows the 'Edit User' form with the following fields and options:

- User ID Last Changed:** 12/02/2022
- User ID:** TestUser
- User Name:** Testing User
- Password Last Changed:** 12/02/2022
- Password:** [Redacted]
- Confirm Password:** [Redacted]
- Password Never Expires
- Password Expires in Days
- User Must Change Password at Next Login
- User Should have Administrative / Security Access
- Account is locked

Buttons: Update, Cancel

User Password Change Screen:

The Change Password has been changed to allow users to enter passwords up to 64 characters long:



Change Password

Password last changed on: 12/18/2022

New Password:

Confirm New Password:

Change **Cancel**

New passwords cannot match any of the user's previous 3 passwords.

The length of new password must contain at least as many characters as was specified for the "Minimum Password Length" (see Overall Setup above).

If the "Use Complex Password" option is set to "Y" (see Overall Setup above), the password will be required to have at least one each of the following:

- A. upper case alpha character
- B. lower case alpha character
- C. numeric character
- D. special character